

MD-IO84B

8 Input/4 Output Expansion Module for AC-225x-B / AC-425x/B Control Panels Installation Manual

1. Introduction

The MD-IO84B is an optional I/O expansion board for use with Rosslare's AC-225x-B and AC425x-B series of networked access control panels.

This expansion board adds an additional four relay outputs and eight supervised inputs to the access control panel.

The host access controller has complete control over the additional inputs and outputs of the MD-IO84B expansion board. The inputs and outputs can be configured using an access control software system such as Rosslare AxTraxNG™. The software system also configures the MD-IO84B's input connection topology.

Once connected to the system, these IO devices can allow you to scale and expand your system and by using AxTraxNG™ management you can program extended access control features, adding more automation capability to the your system.

This guide explains how to install and begin working with your new MD-IO84B access controller expansion board.

Figure 1: MD-IO84B



2. Technical Specifications

2.1 Electrical Characteristics

Input Voltage	12 VDC
Input Current (not including attached devices)	Standby: 30 mA Maximum: 135 mA
Number of Inputs	8
Number of Outputs	4
Output Relays	5 A with N.O., N.C., and COM contacts Form-C relays
Inputs Voltage	5 VDC maximum voltage

2.2 Input Characteristics

Input Type:	Selectable as: <ul style="list-style-type: none">• Normally Open• Normally Closed• Non-supervised (2 states)• Supervised with one resistor (3 states)• Supervised with two resistors (4 states)
-------------	---

2.3 Physical Characteristics

Dimensions (L x W x D)	100 x 75.9 x 32.5 mm (3.9 x 3.0 x 1.3 in.)
Weight:	98.2 g (3.5 oz)

2.4 LED Indicators

Power LED:	Active when connected to a power source
Output LEDs:	Four LEDs Each output LED is active when an output relay is energized and N.O. to COM contacts are shorted.

3. Attaching the MD-IO84B

To attach the MD-IO84B:

1. Disconnect power to the access control panel before attaching the MD-IO84B.
2. Remove the MD-IO84B cover by lightly pulling one of the cover knobs away from the circuit board. The entire cover comes away from the board.
3. Peel off the label on the cover of the panel marked "Remove to install I/O board".



The label is located on the same side of the panel as the DIP switch.

4. Insert the 10-pin male connector of the MD-D02B into the gap in the panel cover labeled "IO EXPANSION SLOT".



The text on the MD-D02B must face the same way as the text on the panel cover.

5. Tighten the screws securing the cover to the access control panel, and the four Philips screws on the MD-D04B circuit board.
6. Replace the cover on the expansion board, using it as a guide to ease the MD-D04B into the panel's 10-pin female connector.

4. Wiring Instructions

4.1 Input Wiring Options

There are 4 input wiring options:

- Normally Open
- Normally Closed
- Normally Open Supervised with one or two resistors
- Normally Closed Supervised with one or two resistors

Figure 2 shows the normally open input connection.

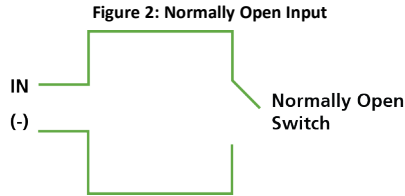


Figure 3 shows the normally closed input connection.

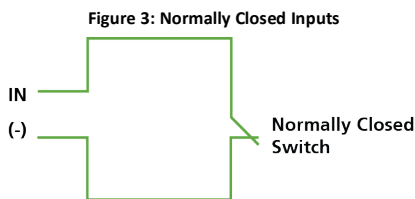
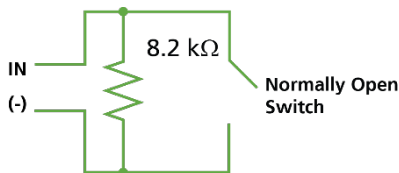


Figure 4 shows the normally open supervised input connection with single resistor.

Figure 4: Normally Open Supervised Inputs with Single Resistor



Normally Open Supervised inputs with one resistor must be connected with an 8.2 kΩ resistor in parallel to the input switch contacts.


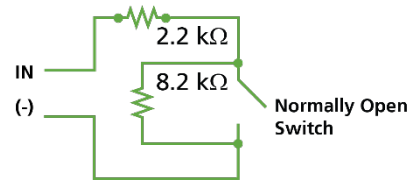
 Always wire resistors on the input switch and not on the terminal block.

Figure 5 shows the normally open supervised input connection with double resistor.

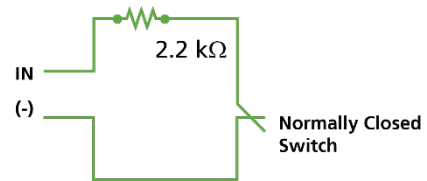
Figure 5: Normally Open Supervised Inputs with Double Resistor



Normally Open Supervised inputs with two resistors must be connected with an 8.2 kΩ resistor in parallel and a 2.2 kΩ resistor in series to the input switch contacts.

Figure 6 shows the normally closed supervised input connection with single resistor.

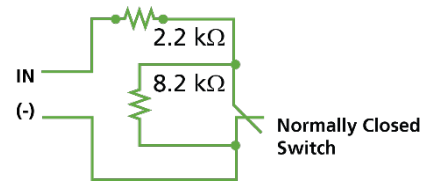
Figure 6: Normally Closed Supervised Input with Single Resistor



Normally Closed Supervised inputs with a single resistor must be connected with a 2.2 kΩ resistor in series to the input switch contacts.

Figure 7 shows the normally closed supervised input connection with double resistor.

Figure 7: Normally Closed Supervised Input with Double Resistors



Normally Closed Supervised inputs with two resistors must be connected with an 8.2 kΩ resistor in parallel and a 2.2 kΩ resistor in series to the input switch contacts.

4.2 Outputs

Electrical devices can be switched using the voltage free relay contacts.

Rosslare recommends using suppression diodes for all outputs that are connected to inductive loads and activated by DC current, such as Magnetic Lock ("Maglock") or door strike devices.

Each suppression diode must be connected near its inductive load. Always attach the diode's cathode to the +V terminal of the load. Attach the diode's anode to the -V terminal.

For more information, refer to your access controller's Installation and User Guide.

5. Operating the MD-IO84B

The access control panel detects the MD-IO84B expansion board when it powers up. When defining the panel in the access control panel's PC application (such as AxTraxNG), select the option designating the panel name with a designation of "MD-IO84B".

Define inputs and outputs using the access system software.

Define each input's type and make sure the connection is compatible with the input wiring.

Input and outputs type and function selection in the access control software are usually similar to the host access control panel general purpose inputs and outputs.

When using AxTraxNG, define input types from the "Inputs" tree menu. Input and output functions are defined using the "Links" element within each "Panel" tree menu item.

For more information, refer to the *AxTraxNG™ Software Installation and User Manual*.

Limited Warranty

The full ROSSLARE Limited Warranty Statement is available in the Quick Links section on the ROSSLARE website at www.rosslaresecurity.com.

Rosslare considers any use of this product as agreement to the Warranty Terms even if you do not review them.

Contact Information

United States and Canada

Rosslare Security Products, Inc.
Southlake, TX, USA
Toll Free: +1-866-632-1101
Local: +1-817-305-0006
Fax: +1-817-305-0069
support.na@rosslaresecurity.com

Europe

Rosslare Israel Ltd.
22 Ha'Melacha St., P.O.B. 11407
Rosh HaAyin, Israel
Tel: +972-3-938-6838
Fax: +972-3-938-6830
support.eu@rosslaresecurity.com

Latin America

Rosslare Latin America
Buenos Aires, Argentina
Tel: +54-11-4001-3104
support.la@rosslaresecurity.com

China

Rosslare Electronics (Shenzhen) Ltd.
Shenzhen, China
Tel: +86-755-8610-6842
Fax: +86-755-8610-6101
support.cn@rosslaresecurity.com

Asia Pacific, Middle East, Africa

Rosslare Enterprises Ltd.
Kowloon Bay, Hong Kong
Tel: +852-2795-5630
Fax: +852-2795-1508
support.apac@rosslaresecurity.com

India

Rosslare Electronics India Pvt Ltd.
Tel/Fax: +91-20-40147830
Mobile: +91-9975768824
sales.in@rosslaresecurity.com



• EN ISO 13485



ROSSLARE
SECURITY PRODUCTS

0706-0960671+00